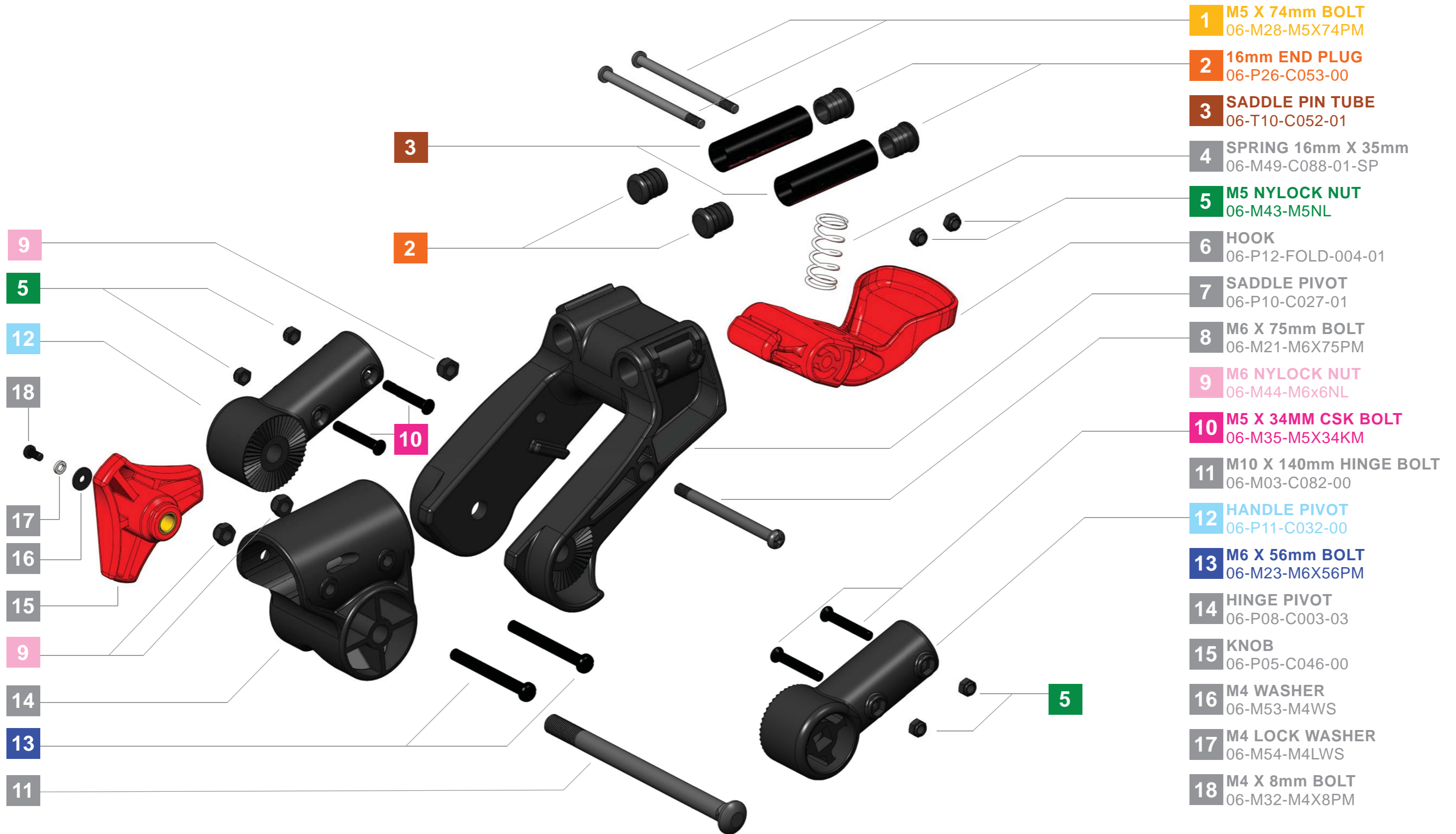


MODEL
2.0

MODEL
3.0

UPPER SADDLE ASSEMBLY



- 1** M5 X 74mm BOLT
06-M28-M5X74PM
- 2** 16mm END PLUG
06-P26-C053-00
- 3** SADDLE PIN TUBE
06-T10-C052-01
- 4** SPRING 16mm X 35mm
06-M49-C088-01-SP
- 5** M5 NYLOCK NUT
06-M43-M5NL
- 6** HOOK
06-P12-FOLD-004-01
- 7** SADDLE PIVOT
06-P10-C027-01
- 8** M6 X 75mm BOLT
06-M21-M6X75PM
- 9** M6 NYLOCK NUT
06-M44-M6x6NL
- 10** M5 X 34MM CSK BOLT
06-M35-M5X34KM
- 11** M10 X 140mm HINGE BOLT
06-M03-C082-00
- 12** HANDLE PIVOT
06-P11-C032-00
- 13** M6 X 56mm BOLT
06-M23-M6X56PM
- 14** HINGE PIVOT
06-P08-C003-03
- 15** KNOB
06-P05-C046-00
- 16** M4 WASHER
06-M53-M4WS
- 17** M4 LOCK WASHER
06-M54-M4LWS
- 18** M4 X 8mm BOLT
06-M32-M4X8PM